



**FLEX**

**PNEUMATIC PRE-PRINTED LABEL APPLICATOR**

**L&C**

**LABELING  
& CODING**

# FLEX

## PNEUMATIC PRE-PRINTED LABEL APPLICATOR

### THE EVOLUTION OF UPTIME

Print and apply or pre-printed labeling automation solutions that elevate manufacturing, material handling, and supply chain operations for a better bottom line.

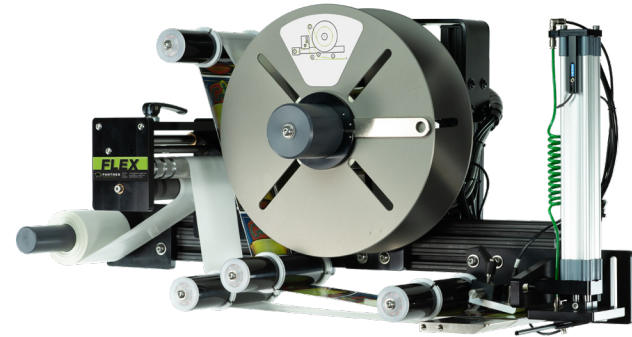
## FLEXIBLE CONFIGURATIONS + BUDGET FLEXIBILITY.

Introducing the Panther FLEX – the economical and FLEXible pre-printed label applicator. Built for ultimate affordability and versatility, the entire system is engineered around a reconfigurable backbone that allows for horizontal, vertical, or custom arrangements – perfect for your specific application or spatial requirements. The FLEX provides the ultimate FLEXibility, both for your operations and your budget.

The FLEX is engineered to be manufactured in either a horizontal or vertical arrangement to provide a perfect fit within your specific environment.

And, with either arrangement, the FLEX has been engineered to allow the backbone of the system to be extended so the applicator can apply labels from greater distances, if needed.

A labeling automation solution from Panther Industries will immediately elevate your manufacturing, distribution, and fulfillment processes to realize bottom line benefits through increased throughput, reduced expenses, and decreased waste/loss.



## No matter what you're labeling – products, packages, pallets, or polybags – Panther features effective labeling automation solutions that help your operations:

### INCREASE THROUGHPUT

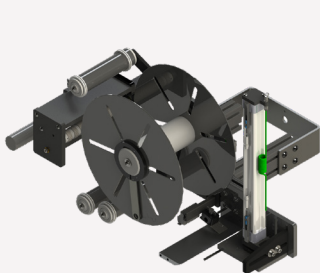
Faster fulfillment speeds within the same or smaller footprint.

### REDUCE EXPENSES

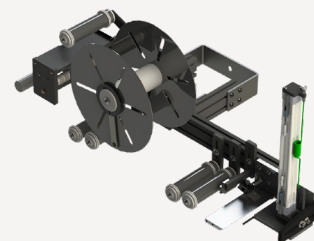
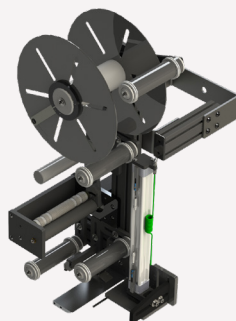
Our lowest-cost robot eliminates your highest labor expense (turnover, onboarding, and training).

### DECREASE WASTE/LOSS

Mitigation of waste and loss due to human error or outdated manual processes.



*The FLEX is engineered to be manufactured in either a horizontal or vertical arrangement to provide a perfect fit within your specific environment.*



*The backbone of the system can be extended to apply labels from greater distances, if needed.*



*Remote mounted control box includes a 4" touch screen display.*

# FEATURES

## Controls

- 16 point I/O PLC
- Quick change electrical connections
- Lighted Indicators for immediate feedback
- Position sensor ensures applicator is home prior to printing a label

## Applicator Options

Completely modular system with multiple configurations:

- Tamp (up to 18" of stroke)
- Tamp/Blow
- Swing Arm
- Wipe On
- Integrated Table

## Additional Features

- Product detect photoeye
- O-ring driven take-up
- OEM design for off-the-shelf replacement parts
- Easy access to solenoids
- LED indicators on all devices
- Adjustable T-Base stand

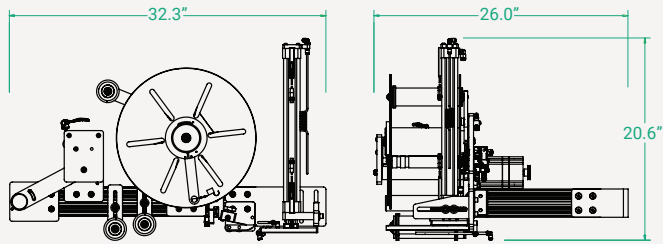
## Customized Options

- Tower lamp (indicating operational status)
- Low label detection
- Quick-change applicator heads to accommodate multiple label sizes
- 80/20 overhead mounting bracket
- 12" - 24" stand height extension

# SPECIFICATIONS

## Dimensions

- 32.3" (w) x 20.6" (h) x 26.0" (d)
- Dimensions subject to change with extended spine or customized configuration



## Hardware

- Fasteners: Nickel-plated and corrosion-resistant
- M12/M8 sensor connections

## Electrical

- Input: 115VAC @ 5.0 amps 50/60Hz single phase
- Output: 24VDC @ 0.6 amps
- Includes 10' power cord (or optional 25' cord)

## Pneumatics

- 30-60 PSI @ 3 CFM (working) / 0 CFM (idle)
- OSHA approved lockable shutoff
- High flow, low pressure pneumatics for safety

## Applicator

- Placement Accuracy: Within 0.125" w/ consistent product

## APPLICATOR CONFIGURATIONS



### TAMP

A straight tamp, linear applicator for top and side label applications.



### BLOW / TAMP BLOW

For delicate applications where direct contact of the product is not ideal (e.g., food or light objects).



### FRONT/REAR SWING

For front or back label applications, also configurable for top-apply labeling.



### WIPE (ACTIVE OR PASSIVE)

For extreme, fast-paced label applications.



### SWING ARM

Applies labels to a front or side location (or separately to both front and side), around a corner, or around a cylindrical/non-flat object.



### INTEGRATED TABLE

A semi-automated process where items are labeled individually.



### CUSTOM

Panther has the expertise to design custom applicator options that do not fit into our standard configurations.





Labeling automation solutions from Panther Industries are engineered to provide reliable operation with simplified maintenance. We understand that 100% uptime is critical to your operations, so our products are designed to run (and run). Our flexible systems feature multiple application methods and are easily integrated and commissioned into your operations.

To learn how labeling automation solutions from Panther Industries will benefit your company's bottom line, contact a Panther sales representative today.

8890 Barrons Blvd.  
Highlands Ranch, CO 80129  
T: 800-530-6018  
P: 303-703-9876  
F: 720-283-9462

Panther.Sales@ProMachBuilt.com  
PantherLabel.com